

SGS horizontal fire sliding doors:

EI 30 | EI 60 | EI 120

Investment
in safety
and functionality

The SGS horizontal fire sliding doors are perfect for installation in various building conditions.

They may be used in public buildings wherever there is a need for separation of fire hazard zones. The door may be supplied with an emergency exit door with or without a threshold, and equipped according to individual needs. **Doors are available in a smoke control or an Ex version.**



Door control:

Manual – in the standard version, the door is equipped with the Slidetronic II control unit and an electromagnetic brake with the option of setting a constant speed of door closure and stoppage at any position, in case of manual door operation in a non-alarm mode.

Automatic – at customer's request, the door may be equipped with the MASTER motor with a control unit, making the door a fully functional and automatic closure of the opening.



Available surface finish

In the standard version, the outer surface of the door is secured with high-quality galvanised coating. At customer's request, doors may be finished in one of the following versions:

- Painted in one of the four standard RAL colours (7035, 9002, 9006, 9010);
- Painted in any RAL colour;
- Made of stainless (acid-resistant) steel;
- Doors may also be finished with MDF, PVC, HDF, solid surface veneer or natural wood veneer according to customer's choice.



Optional equipment:

- Access door and escape exit door with or without a threshold, built-in and fully aligned with the door panel, in the standard version supplied with a roller lock that provides an anti-panic function;
- Door hardware tailored-made to individual needs;
- Hook bolt lock enabling door locking;
- Glazing – 500 x 300 mm with the fire rating identical as the door curtain;
- Door track box.

DOOR STRUCTURE

- The door consists of individual slats based on the steel frame structure, connected with threaded rods;
- Slat is covered with a flame-retardant material and metal sheet;
- Slat is suspended on a guide track; each slat has a separate roller carriage;
- Guaranteed mechanical resistance of the door: 50 000 operating cycles (for electrically operated doors);
- Installation – at customer's choice, to the ceiling or to the lintel.

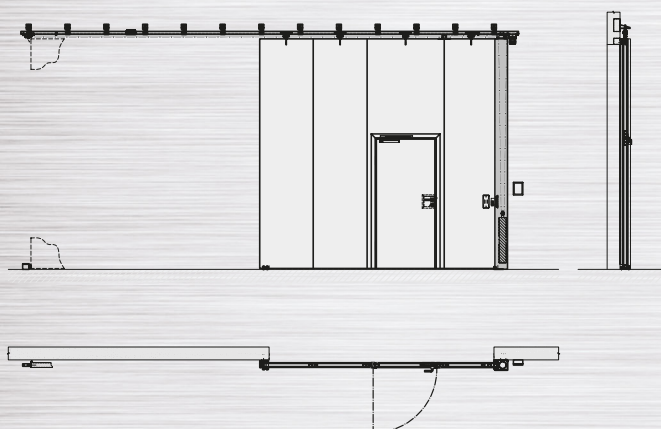
Door types:

- Single-leaf;
- Double-leaf – sliding, symmetrical or asymmetrical;
- Telescopic – two- or three-leaf (El 30, El 60).

The doors are manufactured according to individual needs in accordance with European standards and the Building Research Institute approval (approval no. AT-15-8452/2013). Additionally, the doors are National Institute of Hygiene (PZH) certified (certificate no. HK/B/0998/01/2013) and may be used in Ex zones I and II. Ex II 2G c T4 In accordance with Directive 94/09/EC and EN 1127-1:2007, EN 13463-1:2009, EN 13463-5:2011, TR/CLC 50404:2003

SGS

single-leaf door (option with access door)



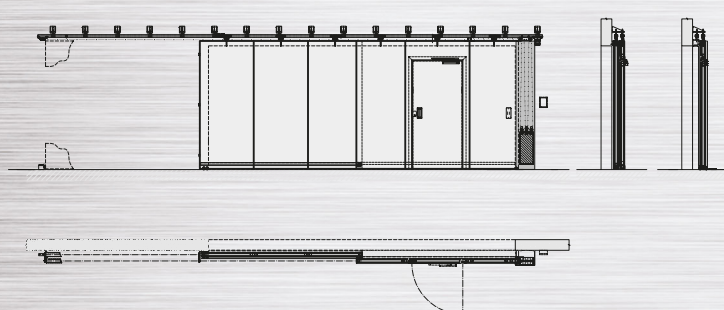
SGS

double-leaf door (option with access door and glazing)



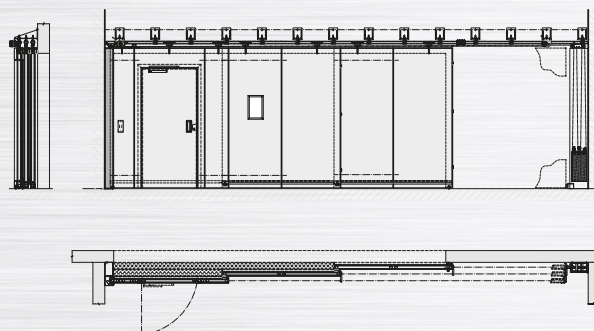
SGS

telescopic double-leaf door (option with access door)



SGS

telescopic triple-leaf door (option with access door and glazing)



**Architect's
zone**



or more technical information, visit:
www.somati-system.pl/architekci.html

Somati System Polska Sp. z o.o. Sp. k.
ul. Oleska 125, 45-231 Opole
e-mail: somati@somati-system.pl
Tel: 77 4531602
www.somati-system.pl



**somati
system**
FIRE DOORS