

GGs vertical fire sliding doors: EI 30 | EI 60 | EI 120

Investment
in safety
and functionality

GGs vertical fire sliding doors are usually used in case of high lintel and limited space on the sides of the opening.

Door closing is typically gravity-operated or using one of the offered motors. The door may be supplied with an emergency exit door with or without a threshold, and equipped according to individual needs. **Doors are available in a smoke control or an Ex version.**



Door control:

Manual – in the standard version, the door is equipped with the Slidetric II control unit and an electromagnetic brake with the option of setting a constant speed of door closure and stoppage at any position, in case of manual door operation in a non-alarm mode.

Automatic – at customer's request, the door may be equipped with a motor with a control unit, making the door a fully functional and automatic closure of the opening.



Available surface finish:

In the standard version, the outer surface of the door is secured with high-quality galvanised coating. At customer's request, doors may be finished in one of the following versions:

- Painted in one of the four standard RAL colours (7035, 9002, 9006, 9010);
- Painted in any RAL colour;
- Made of stainless (acid-resistant) steel;
- Doors may also be finished with MDF, PVC, HDF, solid surface veneer or natural wood veneer according to customer's choice.



Optional equipment:

- Access door and escape exit door with or without a threshold, built-in and fully aligned with the door panel, in the standard version supplied with a roller lock that provides an anti-panic function;
- Door hardware tailored-made to individual needs;
- Hook bolt lock enabling door locking;
- Glazing – 500 x 300 mm with the fire rating identical as the door curtain.

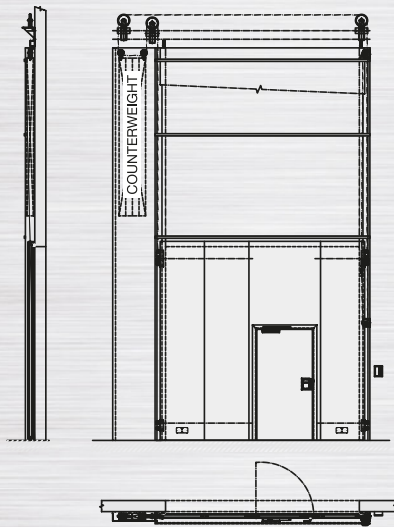
DOOR STRUCTURE

- The door consists of individual slats based on the steel frame structure. Slats are covered with a flame-retardant material and metal sheet;
- The assembled door leaf is equipped with two roller carriages and is suspended in the door track on steel cables with rupture protection;
- Guaranteed mechanical resistance of the door: 50 000 operating cycles

The doors are manufactured according to individual needs in accordance with European standards and the Building Research Institute approval (approval no. AT-15-8452/2013). Additionally, the doors are National Institute of Hygiene (PZH) certified (certificate no. HK/B/0998/01/2013) and may be used in Ex zones I and II. Ex II 2G c T4 in accordance with Directive 94/09/EC and EN 1127-1:2007, EN 13463-1:2009, EN 13463-5:2011, TR/CLC 50404:2003

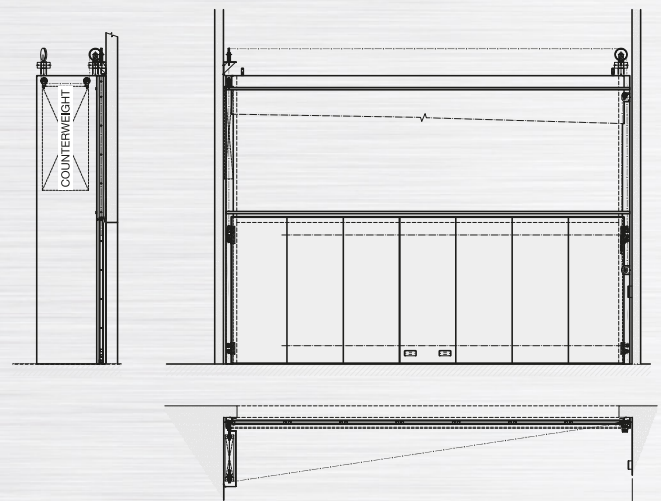
GG5

door with standard counterweight and access door



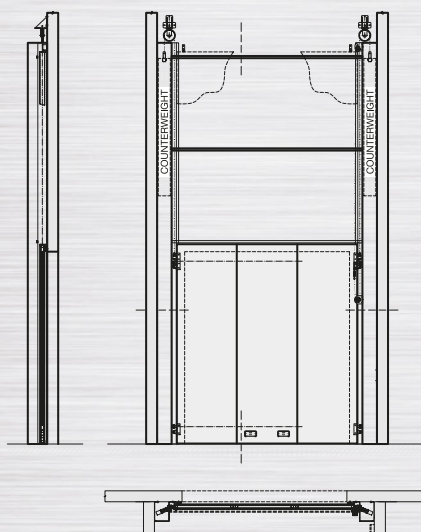
GG5

door with perpendicular counterweight



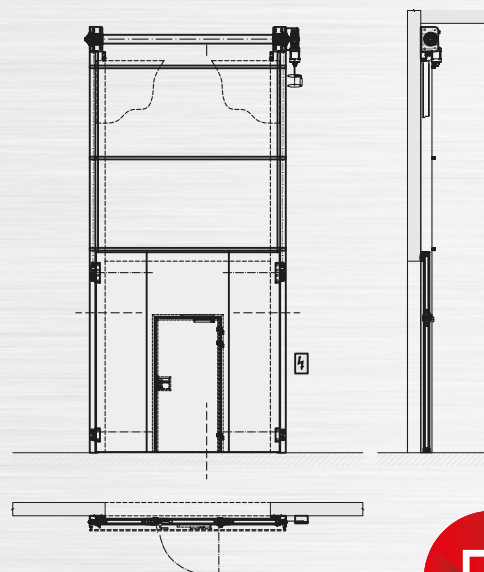
GG5

door with counterweight on both sides of the opening



GG5

door with motor and access door



**Architect's
zone**



For more technical information, visit:
www.somati-system.pl/architekci.html

Somati System Polska Sp. z o.o. Sp. k.
ul. Oleska 125, 45-231 Opole
e-mail: somati@somati-system.pl
Tel: 77 4531602
www.somati-system.pl



**somati
system**
FIRE DOORS